



THE ULTIMATE TOOL FOR SAFETY & HAZARD COMMUNICATION



Banner Stakes

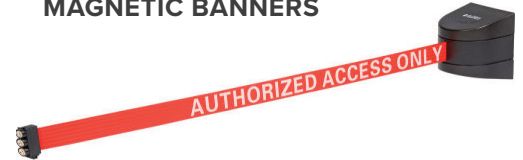
MAGNETIC LINE



VS

Other Barriers

MAGNETIC BANNERS

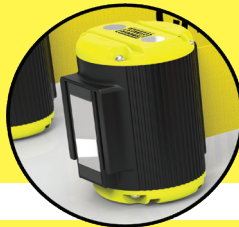


2.5" wide retractable belt - 25% larger than competitors

Belts

1.75" - 2" is the standard width of competitor belts

- Utilizes rare earth magnets, for a significantly stronger performance than typical magnets
- Uses a single piece magnet to provide more surface conductivity for stronger attachment



Magnets

- Competitors use weaker alnico or ferrite magnets
- Use 2 to 3 small round magnets, covering significantly less surface area



Features 3 mounting options:

- Magnet
- Permanent Mount
- Integrated Suction Cups

Barrier can adhere to a variety of surfaces including stainless steel, metal, glass, wood, and plastic.



Mount

- Can only adhere to metal surfaces
- Suction cup technology not available
- Permanent mounting not an option

- Optional light kit attaches to the top of the barrier to increase visibility.



Light Kit

- Lights not available

Other Benefits of Banner Stakes

PERSONALIZE YOUR PRODUCT

Customize your product by changing the ribbon color, message, and company logo

ACCESSORIES

Add a light kit to your system



2.5" WIDE POLYESTER BELT

Red, orange, yellow, black



Convenient Sizing

3 different belt lengths:

- 30' Magnetic (14 Standard Messages)
- 15' Magnetic (8 Standard Messages)
- 7' Magnetics (13 Standard Messages)



For all your safety barrier system needs, contact us today at (855) 809-3800 or visit us at BannerStakes.com